

KMP08-30L

手动换向阀

说明 DESCRIPTION

A cartridge-style manual 4-way, pull-to-shift, directional valve.
四通手动换向阀

工作 OPERATION

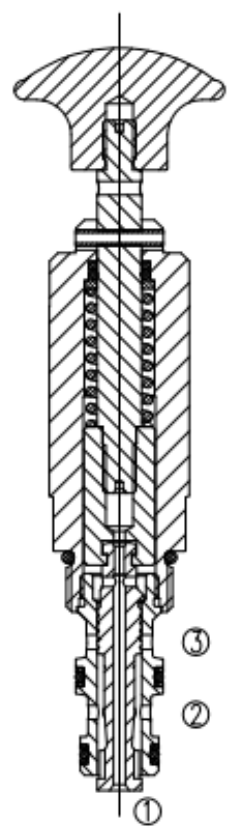
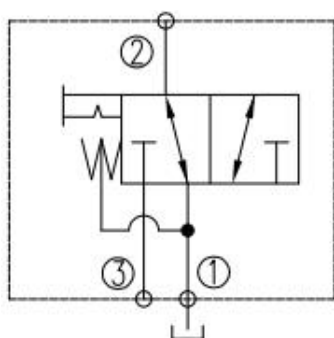
In its steady-state, spring-offset position, the valve directs flow from ③ to ② , and from ④ to ① . In the actuated (pulled) position, the cartridge directs flow from ③ to ④ ,and from ② to ① . The spring chamber is vented at ① .

Note: Pressure at port ① will directly act on the spool and spring.Port ① is intended to be a tank port only. Series operation is prohibited due to the tank port ① pressure rating.A unique pull-and-rotate feature for holding the positive actuated position is optional. A 90° rotation is required to position at the hold slot. The valve resets to spring-return de-actuated with a slight pull and a 90° turn from the locked actuated position.

在初始时，弹簧复位，此阀允许油液从③流向②，然后从④流向①。在接通（拉开）位置时，油液从③流向④，然后从②流向①。弹簧室泄油孔接通①。

注：油口①的压力将直接作用在阀芯和弹簧上。油口①只作为油箱接口。可以采用独特的拉动旋转功能来保持接通阀位。要在固定槽内定位，需要将手柄旋转 90°。轻轻拉动手柄并从锁定阀位旋转 90° 后，弹簧复位，油液通道关闭。由于油箱油口①的额定压力，因此禁止串联使用。

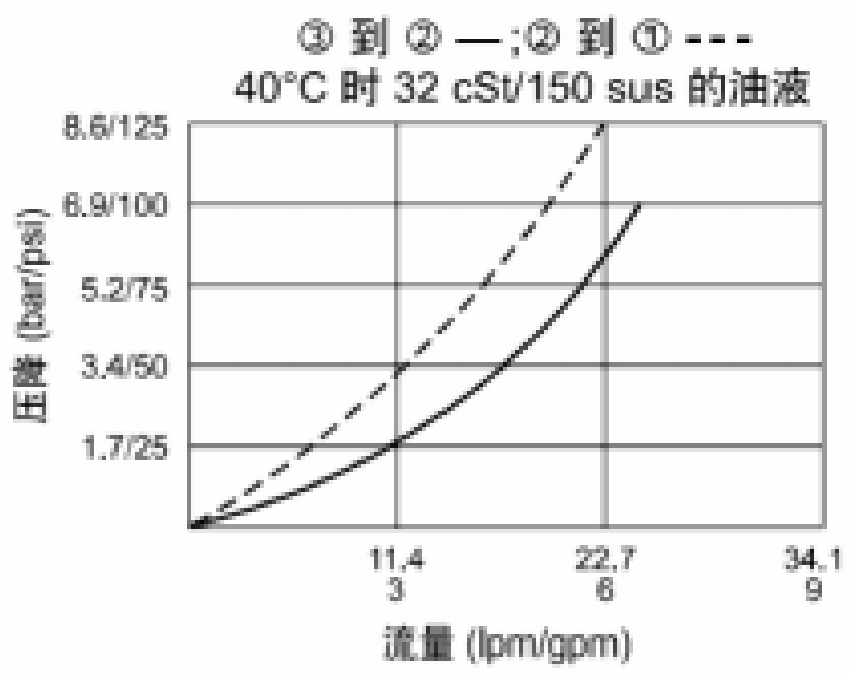
符号 SYMBOL



技术参数 SPECIFICATIONS

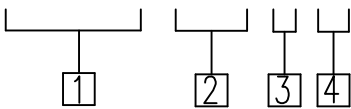
工作压力(Operating pressure):	油口3流向2: 240bar, 油口1, 最大 14bar
内泄露量 (Internal leakage):	At 210bar, less than 82ml/min
温度(Temperature):	-40° C to +120° C
过滤(Filtration):	参考过滤要求 (Reference filter requirements)
油液(Fluids):	Mineral-based fluids with viscosities of 7.4 to 420 cSt. (矿物油粘度
插孔(Cavity):	VC08-3

压力-流量曲线 PRESSURE DROP VS. FLOW



订货代号 TO ORDER

KMP08-30L-0-N



1 公司代码
Company code

2 L
L= 红色塑料手柄
L=Red plastic handle

3 0
0= 只订插件
0=Order plug-ins only

4 密封件 Sealing ring
N 丁氰橡胶 (标准型)
BUNA N (Std.)
V 氟橡胶 Fluorocarbom

安装尺寸 INSTALLATION DIMENSIONS

